



DEKALB COUNTY

2014 TRANSPORTATION PLAN

PROGRESS THROUGH UNITY

Recommendations Online Meeting

November 14, 2013



2014 TRANSPORTATION PLAN

Welcome to our final round of public meetings – the Recommendations Meeting! This is your opportunity to provide feedback on the projects you like the most as well as the ones you feel are not a priority. Thank you for taking the time to interact with us!

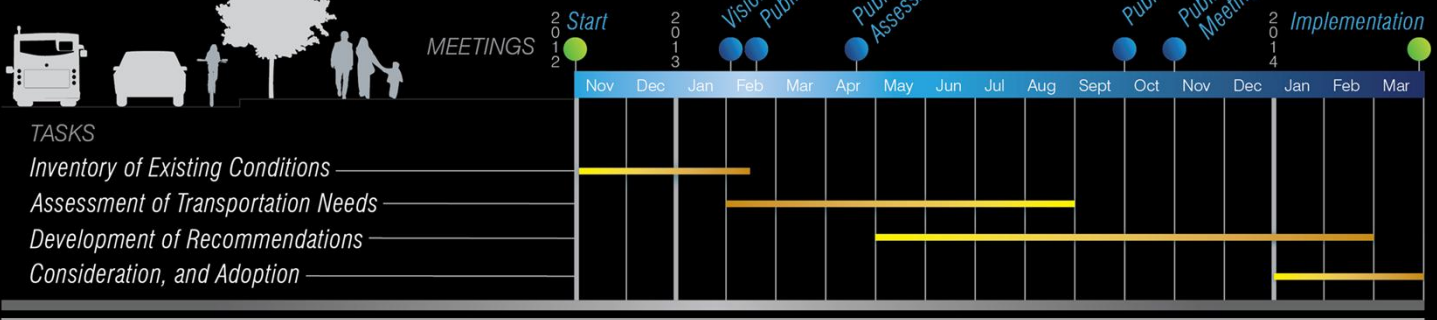
Today's Meeting



- ▣ Since our last meeting
- ▣ Project selection and evaluation process
- ▣ Funding considerations
- ▣ Survey results
- ▣ Project priorities – what we need from you!

During the recommendations meeting, we will update you on our progress since the Needs Assessment meetings back in April, talk about project selection and evaluation, discuss the current funding situation as well as some new opportunities, and review the results of a statistically valid survey conducted across the County. Finally, we want to hear which projects you think should be the highest priority throughout the County.

Schedule



We began the planning process in November of 2012 and have met with the public on two previous occasions: our Kick-off meetings occurred in February 2013 and our Needs Assessment meetings occurred in April 2013. Since that time, we've completed the Existing Conditions and Needs Assessment report which documents the current state of the transportation system in DeKalb as well as what the projected needs will be by the year 2040. That report can be found on the "Documents" page of our website: www.dekalbtransportationplan2014.com.



DEKALB COUNTY

2014 TRANSPORTATION PLAN

PROGRESS THROUGH UNITY

Project Selection and Evaluation

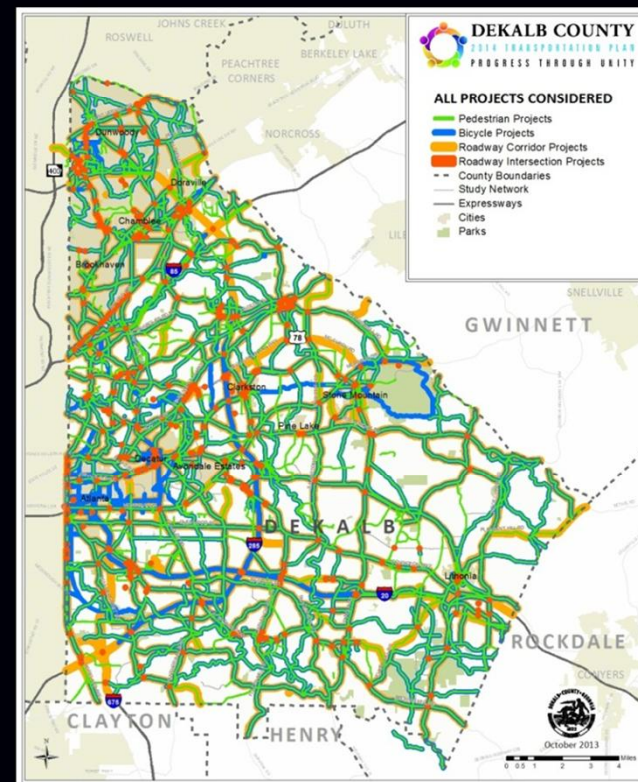
Following the Needs Assessment phase of the project, we developed a list of projects that should be considered as a part of this plan.

Project Consideration



- ▣ Projects from previous planning efforts (59 plans)
- ▣ Feedback from Public / Stakeholders
- ▣ Results of Needs Assessment

Over 3,000 projects considered



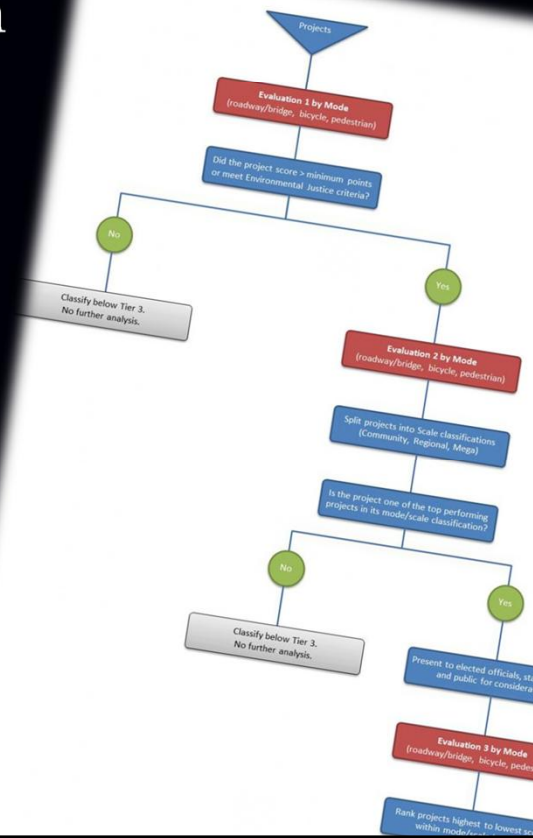
In developing the list of projects, we considered numerous previous planning efforts (approximately 60 studies)! Included in this list of studies were the previous 2007 transportation plan, planning efforts from the cities, small area studies (such as the Livable Centers Initiative and the Master Active Living Plans), and the current Regional Transportation Plan (PLAN 2040). In addition to the studies, we also considered feedback from our stakeholder committee, members of the public, and elected officials. Finally, the results of our Needs Assessment analysis helped to identify other transportation needs. In all, the team considered over 3,000 projects (as shown on the map).

Evaluation Criteria



Three levels of project evaluation

- ▣ **Evaluation 1 and 2**
 - Community values and technical merit
- ▣ **Evaluation 3**
 - Public input and cost



The projects will be evaluated at three possible levels. Evaluations 1 and 2 have already been completed. They focus on community values and technical merit. The Vision and Goals set at the beginning of the plan helped to direct the first round of evaluation including priorities such as improved access to transit, better mobility within and to activity centers and schools, and ensuring mobility for all populations across the County. The second round of evaluation considered how well roads are performing, where sidewalks need the most attention, and where there is a high demand for use of these types of infrastructure. The third round of evaluation takes into account your priorities as a member of the public as well as cost information for each of the projects.

Project Constraining



Three tiers of projects:

- ▣ **Tier 1** – What we can afford with current revenues
- ▣ **Tier 2** – Projects funded through a new revenue source
- ▣ **Tier 3** – Remaining high-scoring projects without identified funding source

At the end of the process, we will subdivide projects into 3 possible tiers. The first tier represents how much money we will have based on current revenue streams. This includes money for Unincorporated DeKalb County, as well as money from the Cities, CIDs, and possible partnerships with the Georgia Department of Transportation. The second tier of projects represent the amount of money we could have from a new revenue source (if the County is able to develop one). The third and final tier will contain all the other high priority projects for which no funding source has been identified.



DEKALB COUNTY

2014 TRANSPORTATION PLAN

PROGRESS THROUGH UNITY

Funding

In order to make the projects in the plan a reality, funding needs to be identified. We'll review current funding sources as well as new funding opportunities.

Funding: HOST



- ▣ HOST through 2040:
 - **\$185M** for Unincorporated DeKalb (\$6-7M per year in 2013 \$) with no new cities
 - **With a new city incorporation, HOST revenues for Unincorporated DeKalb would be severely depleted**

- ▣ New city incorporation would result in far fewer HOST dollars than DeKalb's current resurfacing budget (not including a \$120M backlog)

Homeowners in DeKalb County currently benefit from the HOST – the Homestead Option Sales Tax. Eighty percent of this one-penny sales tax goes back to homeowners in the form of property tax relief. The other 20% is distributed to the Cities and Unincorporated DeKalb County to be used for possible infrastructure improvements. In recent years, this amounts to approximately \$6-7 million for Unincorporated DeKalb, and specifically \$5 million in 2013. When looking forward to the year 2040, this equates to roughly \$185 million in today's dollars. One important consideration is that any new city incorporation will result in a further decrease in HOST dollars for Unincorporated DeKalb County. At the moment, DeKalb spends approximately \$3.5 million in resurfacing annually. The incorporation of a new large city would likely result in fewer HOST dollars than is needed to maintain the current resurfacing schedule in the County. This also does not take into account a \$120 million resurfacing backlog. The lack of additional funding for transportation infrastructure is and will continue to be a challenge for DeKalb County.

Funding Opportunities



- ▣ Transportation sales tax: **\$550M** (all DeKalb)
 - Assumes 1/2 penny, 2015-2025, portion to cities
- ▣ Transportation Utility Fee: **\$250M** (all DeKalb)
 - Assumes ~\$5 per unit of measure (single family home, 1000 SF of retail, etc.), 2015-2025, portion to cities
- ▣ Millage Rate (one mil): **\$76M** (most DeKalb)
 - Assumes 2015-2025, portion to cities
 - For transportation under STD-DS

Funding assumptions: 2013 \$

As a part of this process, it is important to consider what new transportation funding alternatives exist. DeKalb County currently cannot levy a new sales tax because it has reached the maximum threshold (HOST and the one-penny MARTA tax are some of the existing sales taxes). Legislative change would be necessary to elevate the current threshold. Still, it is important to consider the possibility of a new sales tax and the types of revenue that could be generated. Based on today's dollars, a new half-penny sales tax for a 10-year period could raise approximately \$550 million across all of DeKalb County (including portions that would be distributed to the cities). One other option could be a transportation utility fee. This would be a small new fee added to your monthly utility bill based on how much traffic you generate. Using an estimate of \$5 per month for a single family home or 1000 square feet of commercial space or office, approximately \$250 million could be raised across DeKalb County in a 10-year period. One additional example is a millage rate increase of 1 mil for transportation only. In 10 years, this could raise approximately \$76 million.



DEKALB COUNTY

2014 TRANSPORTATION PLAN

PROGRESS THROUGH UNITY

Survey Results

As a part of this plan, we conducted a statistically valid public opinion survey to understand residents' transportation priorities and preferences. Some of the key findings follow.

Please be sure to take the Community Survey found on the website through SurveyMonkey. These are some of the same questions that were asked of the public during the phone survey mentioned above, and we would love to see how your priorities compare.

Survey Findings – Priorities



- ▣ Extremely high priority:
 - Repairing roads – 41%
 - Getting to buses and trains – 34%
 - Walking to destinations – 34%
 - Improving intersection signal timing – 30%
 - More public transit – 30%
 - More reliable travel times – 25%
 - Mobility for residents who don't drive – 25%
 - Safer bike riding – 23%
 - Improving safety for vehicles – 22%

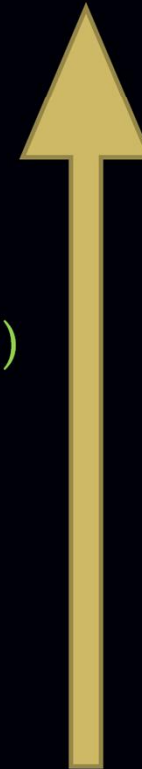


When asked about transportation improvements that were an *extremely high priority*, repairing roads (41%), getting to buses and trains (34%), and walking to destinations (34%) ranked the highest.

Survey Findings – Priorities



- ▣ High + Extremely high priority:
 - Repairing roads – 77% (41%)
 - Getting to buses and trains – 71% (34%)
 - Walking to destinations – 69% (34%)
 - Mobility for residents who don't drive – 69% (25%)
 - Improving intersection signal timing – 66% (30%)
 - More public transit – 66% (30%)
 - Improving safety for vehicles – 62% (22%)
 - More reliable travel times – 59% (25%)
 - Safer bike riding – 53% (23%)

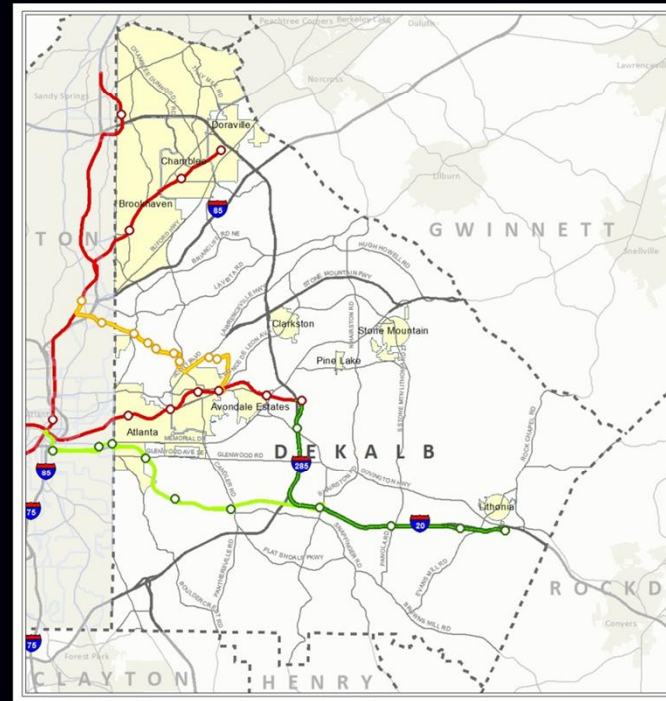


When we combined the scores for *extremely high priority* (in parentheses) and *high priority*, the transportation improvements that ranked highest (total scores listed first) are repairing roads (77%), getting to buses and trains (71%), walking to destinations (69%), and mobility for residents who don't drive (69%).

Other Key Survey Findings



- Over 60% of the population did not know the Clifton Corridor or I-20 Corridor transit projects.
 - However, 78% support using city/county funds to help complete one or both projects



MARTA is considering two major transit expansion projects: The I-20 Corridor and the Clifton Corridor. The I-20 project tentatively consists of Bus Rapid Transit inside the Perimeter and an extension of Heavy Rail Transit from the Indian Creek Station to the Stonecrest Mall area. The Clifton Corridor tentatively connects the Lindbergh Station with the Avondale Station (through Emory and the CDC) using Light Rail Transit. When asked about these two projects, over 60% of the population surveyed responded that they did not know the projects. When asked if city/county funds should be used to help complete the projects, 78% said they would be supportive.

Other Key Survey Findings



- ▣ 75% of those surveyed would support (strongly or somewhat) the county raising new funds to:
 - maintain/repair its transportation system
 - expand/improve its transportation system

Seventy-five percent of the surveyed population said they would support the County raising new funds to either maintain and repair or expand and improve it's transportation system (roads, bridges, sidewalks, bike lanes and trails, etc.).

Other Key Survey Findings



- ▣ Of new possible funding sources, the following percent would favor (strongly or somewhat):
 - New local option sales tax – 42%
 - Property tax increase – 24%
 - Transportation utility fee – 27%
 - Impact fees – 80%

While this transportation plan will not specifically recommend new revenue sources that could raise money for transportation maintenance and infrastructure, it is important to discuss some of the options and to understand how residents feel about each. Recognizing the current limited dollars available, it is important for DeKalb County to consider new sources of funding to help maintain and improve transportation infrastructure for its residents and employees.

When asked about new possible funding sources, impact fees (fees charged to those who build new developments) ranked the highest. Following that, a new sales tax was favored by 42% of the population, with a property tax increase and transportation utility fee scoring the lowest.



DEKALB COUNTY

2014 TRANSPORTATION PLAN

PROGRESS THROUGH UNITY

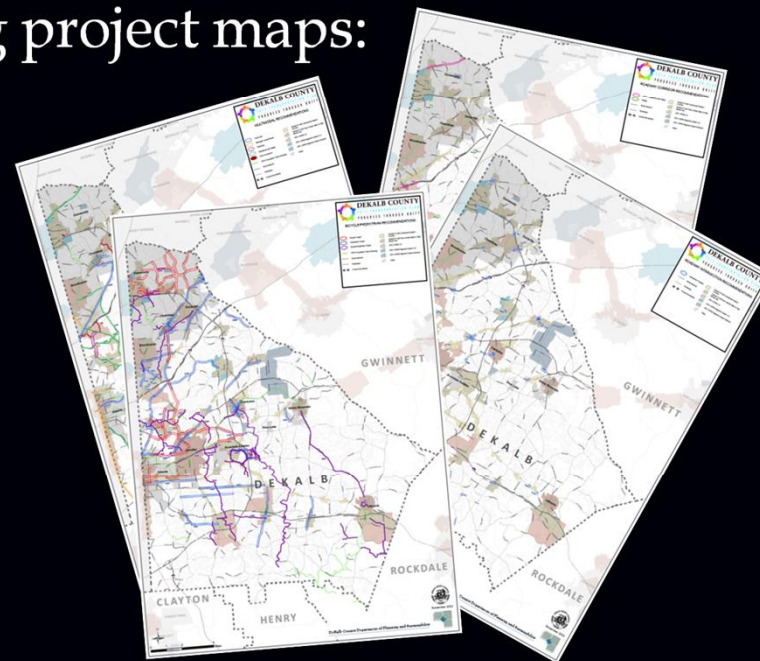
**Tell us your
priorities!**

One of the most critical parts of the Recommendations Meetings is getting your input on priority projects!

What we need from you



- ▣ Review the following project maps:
 - Bike and Pedestrian
 - Roadway Intersection
 - Roadway Corridor
 - Multimodal Projects (roadway with bike, pedestrian, transit)



www.dekalbtransportationplan2014.com/documents

There are four maps online showing bike and pedestrian, roadway intersection, roadway corridor, and multimodal projects. Download each of these maps.

What we need from you



2014 TRANSPORTATION PLAN
PROGRESS THROUGH UNITY
BICYCLE/PEDESTRIAN RECOMMENDATIONS

- Bicycle Project
- Pedestrian Project
- Bicycle/Pedestrian Project
- PATH Foundation Trails (Existing)
- Study Network
- Roadways
- County Boundaries
- Default FLUM Commercial Redevel
Corridor
- Default FLUM Town Center Med or High
Mass Use
- ARC UGPM LCI
- ARC UGPM Regional Center LCI
- ARC UGPM Regional Center Attractor
- Cities

DEKALB COUNTY
2014 TRANSPORTATION PLAN
PROGRESS THROUGH UNITY

DeKalb County Department of Planning and Sustainability

Project List Survey - Bicycle and Pedestrian Projects (Page 2 of 3)

As a result of extensive input and information from DeKalb cities and County plans, the project team has identified and evaluated thousands of transportation projects. As a member of the community, we need your assistance to further prioritize the extensive list of transportation projects. **INSTRUCTIONS:** Use the list of projects below in combination with the link to the online survey (administered through SurveyMonkey) to select which projects are your highest and lowest priorities. You can find that link along with accompanying maps and other materials on the project website at www.dekalbtransportationplan2014.com/documents

Project ID	Project Name	From	To	Project Description
0858	Glenwood Ave/ Glenwood Rd	Candler Rd (SR 155)	Columbia Rd	Install sidewalks and improve pedestrian crossings along this corridor.
0924	McAfee Rd	Candler Rd (SR 155)	Second Ave	Install sidewalks and improve pedestrian crossings along this corridor.
0974	Pleasantdale Road	Chamblee Station	Norcross	Install sidewalks and improve pedestrian crossings along this corridor.
0988	Pleasantdale Rd	Tucker/ Norcross	I-85	Install sidewalks and improve pedestrian crossings along this corridor.
1991	Ponce de Leon Ave	Moreland Ave/ Briarcliff Rd	Eastview Dr	Install sidewalks and improve pedestrian crossings along this corridor.
1095	Dunwoody Area Bike Route	Mount Vernon Rd	I-285	Improve access for bikes along these corridors: N Peachtree Rd, Tilly Mill Rd, Peachford Rd, Old Spring House Ln, Dunwoody Park, Perimeter Ctr E, Valley View, Meadow Lane, Vermont, Peeler, Happy Hollow, Womack, Old Perimeter, Ridgeview.
1230	N Druid Hills Rd	Peachtree Rd	Colonial Dr	Improve access for bikes and pedestrians along this corridor.
1231	Old Springhouse Ln	Chamblee-Dunwoody Rd	Perimeter Center E	Improve access for bikes and pedestrians along this corridor. Extend a multimodal connection to Perimeter Center East.
1237	Church St	Mauk St/ Rowland St	N Indian Creek Dr	Church Street multi-use path (10-12 feet), plant and utility zone (5 feet), railroad safety fencing (adjacent to railroad) from N Indian Creek Rd to Mauk St.
1241	Greenway	Stone Mountain Trail	Covington Rd/ Ashton Pl	Create a trail connection between Stone Mtn Trail and Covington Rd/ Ashton Pl
1256	Shoal Creek Trail	Rainbow Dr	SR 155 / Flat Shoals Pkwy @ Warriors Path / county-owned Hudson Park	Shoal Creek Trail from Rainbow Drive to SR 155 / Flat Shoals Pkwy @ Warriors Path / county-owned "Hudson Park" (2 miles)
1278	E Ponce de Leon Ave (North Side)	N Indian Creek Rd	Eastern City Limits	East Ponce streetscapes (north side of Rd) from N Indian Creek Rd to Eastern City Limits
1279	E Ponce de Leon Ave (South Side)	N Indian Creek Rd	Eastern City Limits	East Ponce streetscapes (south side of Rd) from N Indian Creek Rd to Eastern City Limits

Additionally, download the list of projects (also on the website). Each recommendation on the maps has a Project ID listed next to it. Search for the same Project ID in the list of improvements. Projects are listed by modal grouping and in numerical order.

What we need from you



- ▣ Review Mega projects
 - Major interstate projects
 - Transit expansion (I-20 and Clifton Corridors)
- ▣ Review truck routing
- ▣ Review functional classification

Also download the Mega projects, truck routing, and functional classification maps. The Mega projects are larger interstate or transit expansion projects (such as the I-20 and Clifton Corridor projects) for which DeKalb will advocate but not be required to provide funding.

What we need from you



- ▣ Fill out the survey on the Documents page of our website
www.dekalbtransportationplan2014.com/documents
- ▣ For each mode sheet, tell us:
 - Your top projects (up to 5)
 - Your bottom projects (up to 5)
- ▣ Fill out the remaining questions on the community survey

Maps, project lists, and survey link are here

DEKALB COUNTY
2014 TRANSPORTATION PLAN
PROGRESS THROUGH UNITY

About Timeline Documents Feedback

November Online Public Meeting Documents

- [Click here to register for the online meeting.](#)
- [\(If you are prompted for a password, it is 1234\)](#)
- [Tell us your project preferences here.](#)
- [Map of Bicycle and Pedestrian Projects](#)
- [Map of Multimodal Projects](#)
- [Map of Roadway Corridor Projects](#)
- [Map of Roadway Intersection Projects](#)
- [Map of Mega Projects](#)
- [Map of Proposed changes to Truck Routes](#)
- [Map of Functional Classifications](#)
- [List of Projects](#)

Project Documents

- [Project Study Area](#)

Existing and Future Needs Assessment

- [Existing Conditions and Needs Assessment Report](#)
- [Appendix](#)

Census Maps

- [Poverty Rate and Median Housing](#)
- [Percent Over 65 and Race/Minority](#)

After reviewing the maps and project lists, provide your feedback using the SurveyMonkey link on the website. Tell us, for each of the four project modes, up to 5 of your favorite projects and up to 5 of your least favorite projects. Then complete the remainder of the survey and let us know if you have any final comments or questions.

Public Meeting Dates



- ▣ **Public Meetings:**
 - **Thursday, November 7th | 6:30 – 8:00 PM,**
 - Interactive College of Technology
 - **Tuesday, November 12th | 6:30 – 8:00 PM,**
 - Fairfield Inn & Suites (Mall at Stonecrest)
 - **Monday, November 18th | 6:30 – 8:00 PM**
 - Porter Sanford III Performing Arts Center
- ▣ **DeKalb Neighborhood Summit:**
 - **Saturday, November 16th | 9:30 AM – noon**
 - The Courtyard Marriott Hotel - Downtown Decatur
- ▣ **Online Meeting:**
 - **Thursday, November 14th | 6:30 – 8:00 PM**

Please help us to advertise the remaining public meetings! We will be at the Neighborhood Summit on Saturday November 16th and at the Porter Sanford Center on Monday November 18th. Also, if people cannot join us in person, they can review this slide presentation, the project maps , and the project list online, and submit their priority projects through our SurveyMonkey link!